

Reference Packs



PR10



PR11



PR12



PR13



PR14

Selection Packs



PS10



PS11



PS12



PS13



PS14



PS15



PS16



PS17



PS18

Orona 3G Public Packs

REFERENCE PACKS

SELECTION PACKS

PR10 PR11 PR12 PR13 PR14 PS10 PS11 PS12 PS13 PS14 PS15 PS16 PS17 PS18

CEILINGINGS AND LIGHTING

MODEL	LED Spotlights	UP37	○	○	●	○	●	○	○	○	○	○	○	○	○	○
	LED panel (200x200 mm)	UP41		●		●				●						
		UP43									●					
	LED panel (600x600 mm)	UP47											●			
		UP53													●	
		UP67	●		○		○						●		●	
LED panel (complete, consult availability of dimensions)	UP73								●							
	UP71						●		●							
CEILING MATERIAL	ST01 St St Base		●	●	●	●	●	○	○	○	○	○	○	○	○	○
	ST02 St St Plus		○	○	○	○	○	●	●	●	●	●	●	●	●	●
OTHERS	Automatic lighting switch-off		●	●	●	●	●	●	●	●	●	●	●	●	●	●
	Emergency hatch		○	○	○	○	○	○	○	○	○	○	○	○	○	○
	Fan		○	○	○	○	○	○	○	○	○	○	○	○	○	○

CAR WALLS

PANELS	Neocompact Colour	NC02 Red Autumn								●P							
		NC03 White Snow							●P			●P					
		NC05 Blue Berry													●P		
		NC25 Warm Green				●P											
	Neocompact Wood	NC12 Wood Sinatra							●F/L								
		NC15 Oak Tree			●												
		NC21 Oak White								●							
		NC22 Oak Grey	●									●F/L					
	Neocompact Texture	NC16 Linen Pure							●								
		NC18 Night Garden												●F			
		NC23 Light Linen				●F/L											
		NC24 Tissue		●													
	Panel Stainless	ST01 St St Base					●				●F/L		●P/L	●F/L	●	●	
		ST02 St St Plus					○				○F/L		○P/L	○F/L	○	○	
	Others	Without cladding (for local fit out)	○	○	○	○	○	○	○	○	○	○	○	○	○	○	○
		Tip-up seat	○	○	○	○	○	○	○	○	○	○	○	○	○	○	○
2 Entrances or 'Through car' for 180, 'Front/Adjacent' for 90&270		○	○	○	○	○	○	○	○	○	○	○	○	○	○	○	

CAR OPERATING PANEL AND INDICATORS

CAR INDICATOR	Dot-matrix		●	●	●	●	●									
	TFT							●	●	●	●	●	●	●	●	●
	Car direction arrows		●	●	●	●	●	●	●	●	●	●	●	●	●	●
	Overload indicator (buzzer & light)		●	●	●	●	●	●	●	●	●	●	●	●	●	●
	Direction arrows on entrance return	○	○	○	○	○	○	○	○	○	○	○	○	○	○	○
	Car gong	○	○	○	○	○	○	○	○	○	○	○	○	○	○	○
	Voice synthesizer	○	○	○	○	○	○	○	○	○	○	○	○	○	○	○
CAR OPERATING PANEL MATERIAL	Inductive acoustic coupler	○	○	○	○	○	○	○	○	○	○	○	○	○	○	○
	ST01 St St Base		●	●	●	●	●	○	○	○	○	○	○	○	○	○
CAR PUSH BUTTONS	ST02 St St Plus		○	○	○	○	○	●	●	●	●	●	●	●	●	●
	Door close push button	○	○	○	○	○	○	○	○	○	○	○	○	○	○	○
	Braille push button	●	●	●	●	●	●	●	●	●	●	●	●	●	●	●
	Key switch push button (Standard or eurocylinder)	○	○	○	○	○	○	○	○	○	○	○	○	○	○	○
	External call cancelling	○	○	○	○	○	○	○	○	○	○	○	○	○	○	○
	Coded call	○	○	○	○	○	○	○	○	○	○	○	○	○	○	○
LANDING INDICATOR	7 Segment	○	○	○	○	○	○	○	○	○	○	○	○	○	○	○
	Dot-matrix	●	●	●	●	●	●	●	●	●	●	●	●	●	●	●
	Next departure indicator	○	○	○	○	○	○	○	○	○	○	○	○	○	○	○
	Landing gong	○	○	○	○	○	○	○	○	○	○	○	○	○	○	○
LANDING PUSH BUTTONS	Key switch push button (Standard or eurocylinder)	○	○	○	○	○	○	○	○	○	○	○	○	○	○	○
	Surface mounted push button	○	○	○	○	○	○	○	○	○	○	○	○	○	○	○
CAR OPERATING PANEL	Horizontal car operating panel	○	○	○	○	○	○	○	○	○	○	○	○	○	○	○

MIRRORS

MIRRORS	MT (Mirror 3/4 narrow)	●F	●F	●F	●F	●F	●F	●F	●F	●F	●F	●F	●F	●F	●F	●F
	Rear-view mirror (EN 81-70)	○	○	○	○	○	○	○	○	○	○	○	○	○	○	○
FINISH	01 Clear	●	●	●	●	●	●	●	●	●	●	●	●	●	●	●

HANDRAILS

	HR04 (Stainless steel tube)	●L	●L	●L	●L	●L	●L	●F/L	●L	●F/L	●F/L	●F/L	●L	●F/L	●L
--	-----------------------------	----	----	----	----	----	----	------	----	------	------	------	----	------	----

FINISHES

SKIRTINGS	SK01 Anodized Aluminium (St St finish)	●	●	●	●	●	●	●	●	●	●	●	●	●	●	●
DOOR MATERIALS (car and landing)	ST01 St St Base	●	●	●	●	●	○	○	○	○	○	○	○	○	○	○
	ST02 St St Plus	○	○	○	○	○	●	●	●	●	●	●	●	●	●	●
	Primed sheet (landing door)	○	○	○	○	○	○	○	○	○	○	○	○	○	○	○
DOOR PANEL TYPE	Standard panel (not big vision)	●	●	●	●	●	●	●	●	●	●	●	●	●	●	●

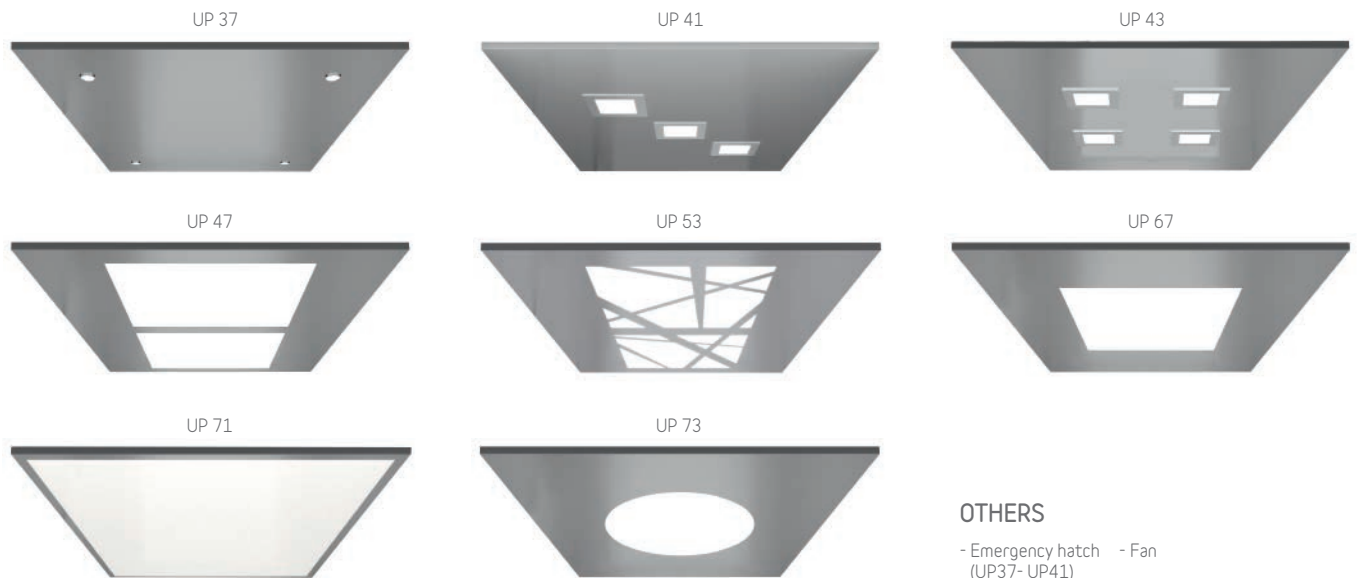
FLOORS

SC-PVC HIGH	SC01 Red Cherry													●		
	SC03 Grey Ice						●	●								
	SC04 Grey Storm		●	●	●	●			●	●	●					●
	SC05 Grey Silver	●													●	
	SC06 Beige Sand															●
	OTHERS	Prepared for granite	○	○	○	○	○	○	○	○	○	○	○	○	○	○
Prepared for PVC		○	○	○	○	○	○	○	○	○	○	○	○	○	○	○

Orona 3G Public PLUS

Ceilings and lighting LED - Automatic lighting switch-off included

MODEL

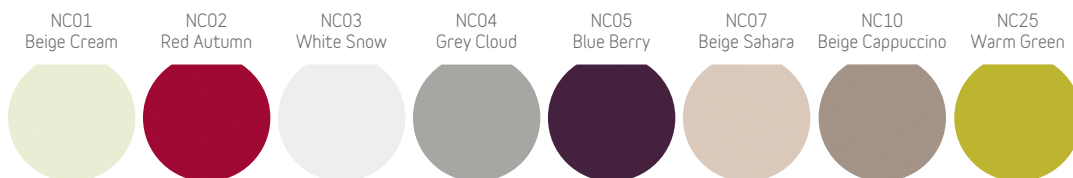


OTHERS

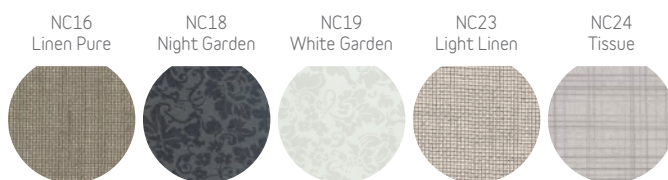
- Emergency hatch - Fan
(UP37- UP41)

Car walls

NECOMPACT COLOUR



NECOMPACT TEXTURE



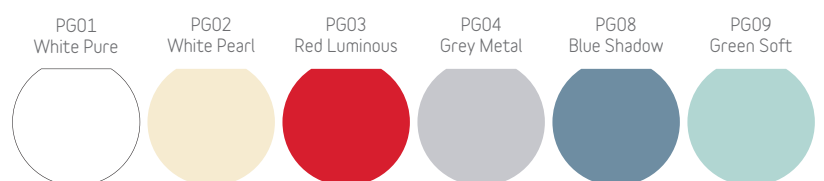
NECOMPACT WOOD



PANEL STAINLESS



GLASS AMBIENCE



OTHERS

- Without cladding (for local fit out)
- Tip-up seat
- 2 Entrances or 'Through car' for 180, 'Front/Adjacent' for 90 & 270

Car operating panel



OTHERS

- Double car operating panel
- Horizontal car operating panel

Car indicator



7 Segment



Dot-matrix



TFT

OTHERS

- Car direction arrows
- Overload indicator (buzzer & light)
- Voice synthesizer
- Direction arrows on entrance return
- Car gong
- Directory
- Inductive acoustic coupler

Landing indicator



7 Segment



Dot-matrix



TFT

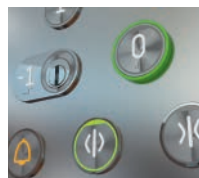


Wall landing indicator

OTHERS

- Next departure indicator
- Landing gong

Car push buttons



Orona Braille circular model



Model with additional contrast

OTHERS

- Door close push button
- Key switch push button (Standard or eurocylinder)
- External call canceling
- Coded call

Orona 3G Series push buttons are water-resistant (IPX3 under EN 60529) and have fully passed the impact and fire tests defined in the EN 81-71 standard.

For enhanced anti-vandalism resistance needs (Category 1), Orona offers its comprehensive PPSS O3G anti-vandalism solutions, which fully complies with the EN 81-71 standard (push buttons, displays, doors, lighting, ceilings, walls, floors, mirrors, enclosures, etc.).

Landing push buttons



Push buttons to suit the lifts control type (1 or 2 push buttons)



Key switch push button (standard or eurocylinder)



Surface mounted push buttons

Mirrors

MW (Mirror 3/4 wide)
 MH (Mirror 1/2)
 MT (Mirror 3/4 narrow)
 Rear-view mirror (EN 81-70)

Bumprails

Wood
 Stainless steel
 PVC
 Double bumprail

Skirtings

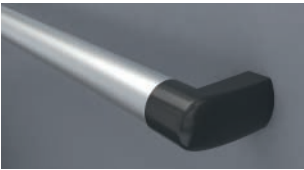
SK01 Anodized Aluminium (St St finish)
 SK02 Lacquered Aluminium

FINISH

01 Clear
 02 Smoked

Handrails

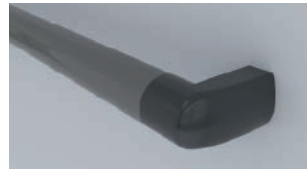
HR01 (Aluminium tube)



HR02 (Aluminium tube)



HR03 (Aluminium tube)



HR04 (Stainless steel tube)



Car operating panel material and/or ceiling and/or doors (car and landing)

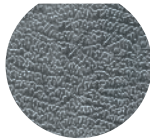
ST01
St St Base



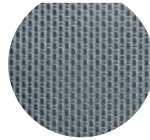
ST02
St St Plus



ST03
St St Elephant Skin Pattern



ST04
St St Linen Pattern



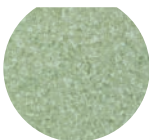
Floors

SC-PVC HIGH

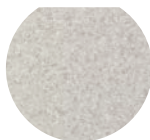
SC01
Red Cherry



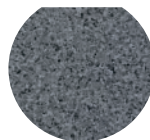
SC02
Green Leaf



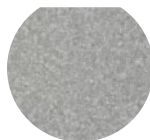
SC03
Grey Ice



SC04
Grey Storm



SC05
Grey Silver



SC06
Beige Sand



SC07
Black Circles



SW CERAMICS Available subject to dimensions

SW01
Black Basalt



SW02
Grey Cement



SW03
Grey Pearl



SW04
Beige Basalt



SW06
Brown Earth



ME-OTHER

ME01
Chequered
Aluminium



ME02
St St Chequered
Pattern



OTHERS

- Prepared for granite (23 mm)
- Prepared for PVC (23 mm or 3 mm in restricted pits)